



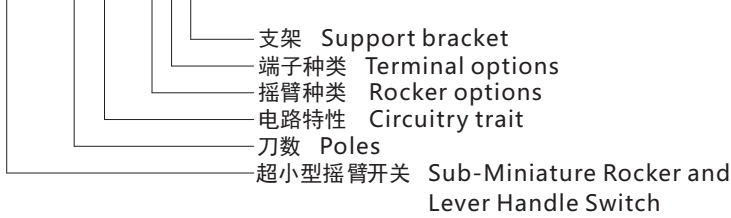
超小型摇臂开关 Sub-Miniature Rocker and Lever Handle Switch SRLS Series



RoHS

型号说明 Ordering Information

SRLS-102-A2T



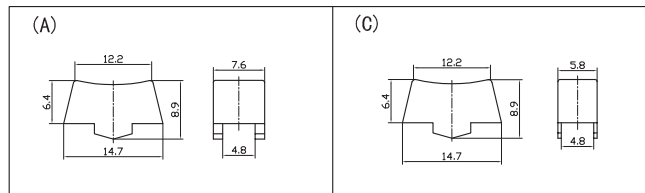
技术特性 Specification

1. 规格 Rating: 3A 125VAC; 1.5A 250VAC
2. 接触电阻 Contact Resistance: 20mΩ max
3. 绝缘电阻 Insulation Resistance: 500VDC 1000MΩ min
4. 耐电压 Dielectric Strength: 1000VAC, 1Minute
5. 操作温度 Operating Temperature: -25°C ~ +85°C
6. 电气寿命 Electrical Life: 10,000 Cycles

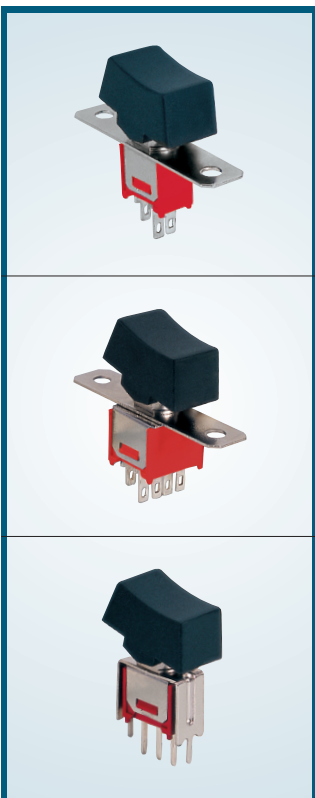
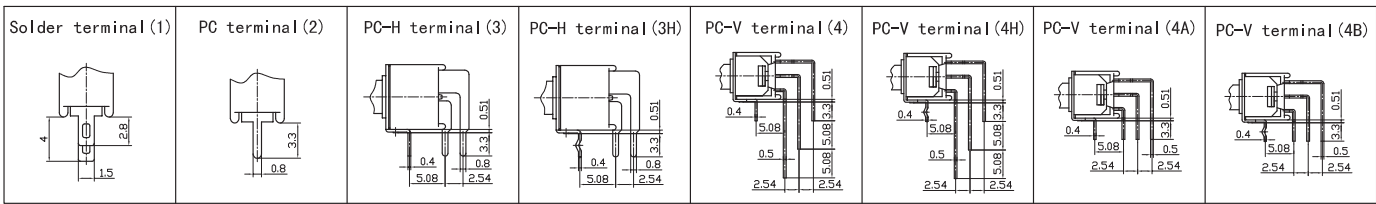
电路特性 Circuitry trait

01	ON	-	OFF
02	ON	-	ON
03	ON	OFF	ON

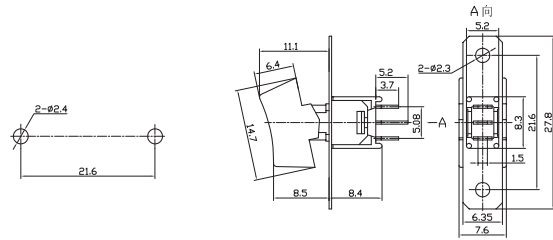
摇臂种类 Rocker options



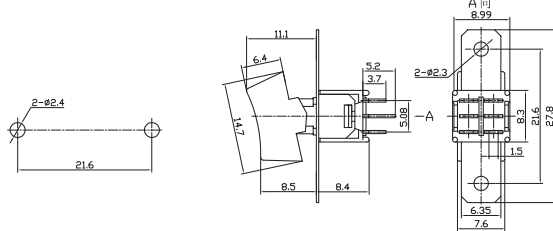
端子种类 Terminal options



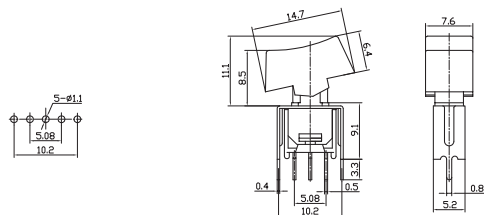
SRLS-102-A1 ON-ON
SRLS-103-A1 ON-OFF-ON
SPDT 3P



SRLS-202-A1 ON-ON
SRLS-203-A1 ON-OFF-ON
DPDT 6P



SRLS-102-A2T ON-ON
SRLS-103-A2T ON-OFF-ON
SPDT 3P





超小型摇臂开关 Sub-Miniature Rocker and Lever Handle Switch **SRLS Series**

	<p>SRLS-202-A2T ON-ON SRLS-203-A2T ON-OFF-ON DPDT 6P</p>	
	<p>SRLS-102-C3H ON-ON SRLS-103-C3H ON-OFF-ON SPDT 3P</p>	
	<p>SRLS-202-C3H ON-ON SRLS-203-C3H ON-OFF-ON DPDT 6P</p>	
	<p>SRLS-102-C4H ON-ON SRLS-103-C4H ON-OFF-ON SPDT 3P</p>	
	<p>SRLS-102-C4B ON-ON SRLS-103-C4B ON-OFF-ON SPDT 3P</p>	
	<p>SRLS-202-C4H ON-ON SRLS-203-C4H ON-OFF-ON DPDT 6P L=4.06; 5.08</p>	